

Back to the roots of Wallachia



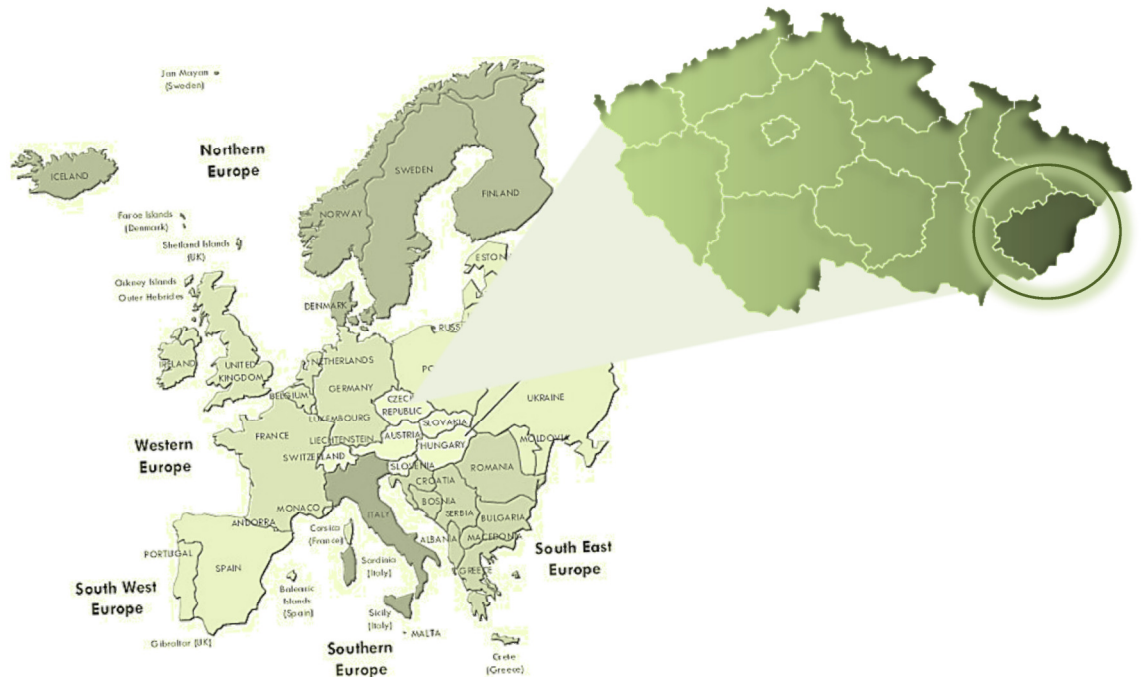
This journey will take you to the time of Wallachian ancestors when a huge cultural, craft and folk were originated. Return with us back to the roots to discover the old world of folk crafts, delicious food and habits that will grab your heart.

This journey offers a unique opportunity to see over Wallachian museums in the morning time and to try everything you saw during the day by yourself in the evening. "Back to the roots of Wallachia" will give you experiences that you cannot get elsewhere thanks to exclusivity of the journey in Europe.

This trip will take you farther than you expect. Take a journey with us!

Location of destination:

Wallachia, Czech Republic



Product description:

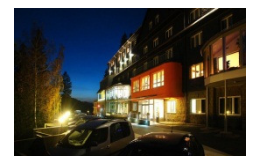
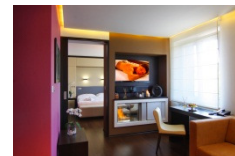
Duration of the journey – 3 days, 2 nights

Date of the journey - TBA

Price per person - TBA

Accommodation – Hotel Lanterna ****

www.lanterna.cz



Program

Friday

The original Wallachian lunch in Rat'ovský šenk
www.ratkovskysenk.wbs.cz

The Karlovské muzeum
www.velkekarlovice.cz

Evening program: carvings, making whistles, chipped doves, basket weaving, embroidering ...

The Kyčerka tavern - dinner, dulcimer music, dance
www.hospodakycerka.cz

Saturday

Wallachian open air museum
www.vmp.cz

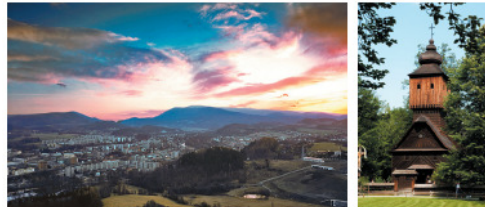
Dinner with local folk music

Evening program: baking bread and local pastries "frgál", buckwheat pillows sewing, local brandy tasting

Sunday

The Buckwheat mill "Šmajstrla": excursion, meeting with a miller
www.pohankovymlyn.com

Rich lunch in the Wallachian chalet "Fojtka"
www.koliba-fojtka.cz



Organizer:



FLY UNITED s.r.o.

Petýrkova 3/1955, 148 00 Praha 4 – Chodov, Czech Republic